



**By Metropolitan Thames Valley**



**SO Resi is a new way of making home ownership possible for more people. You buy a share of your home, with a lower deposit, smaller mortgage and monthly payment on the rest.**

SO Resi redefines shared ownership, by making everything clear and uncomplicated, so you understand how it all works at every stage, before and after you buy. Our SO Resi homeowners are important to us and we aim to build strong, lasting relationships by being here to answer your questions in a language that makes sense.

SO Resi by Metropolitan Thames Valley, a not-for-profit housing association. For over fifty years we've been building good quality, affordable new homes and managing them well. By doing that, we've been helping to create communities where people are proud and happy to live.



A collection  
of 2 & 3  
bed homes

# Convenient rural living

On the leafy outskirts of the Surrey green belt village of Deepcut you'll find SO Resi Camberley: a contemporary collection of 2 bedroom apartments and 3 bedroom houses situated in the newly created neighbourhood of Mindenhurst.

With shopping, dining and good schools nearby plus great connections to commuter links, this new heathland village is surrounded by woodland and open space – offering you the perfect combination of town and country living.

Situated on the former Princess Royal Barracks, SO Resi Camberley forms part of a vibrant and sustainable family community where quality of life and convenience are key.

The area	4
Development overview	8
Connectivity	10
Specification	14
Plans	16



CGI of homes at So Resi Camberley are for illustrative purposes only and subject to change.



# Ideally located

The new neighbourhood will offer all of life’s essential amenities and is strolling distance from the established village of Deepcut with a shop, café and pub, while the towns of Camberley, Frimley and Farnborough which offer stylish shopping, bars and restaurants are a short drive away.

It’s easy to get close to nature with peaceful canal-side walks, historic woodland and country parks on your doorstep; and for families there are plenty of fun activities close by, plus highly rated primary and secondary schools and colleges.

And when it comes to transport, SO Resi Camberley is well connected. Easy access to the M3 provides a direct route into the capital and other business hubs, while the train station in neighbouring Brookwood – a three mile drive away or a scenic cycle along the towpath – connects you to London Waterloo in as little as 35 minutes.

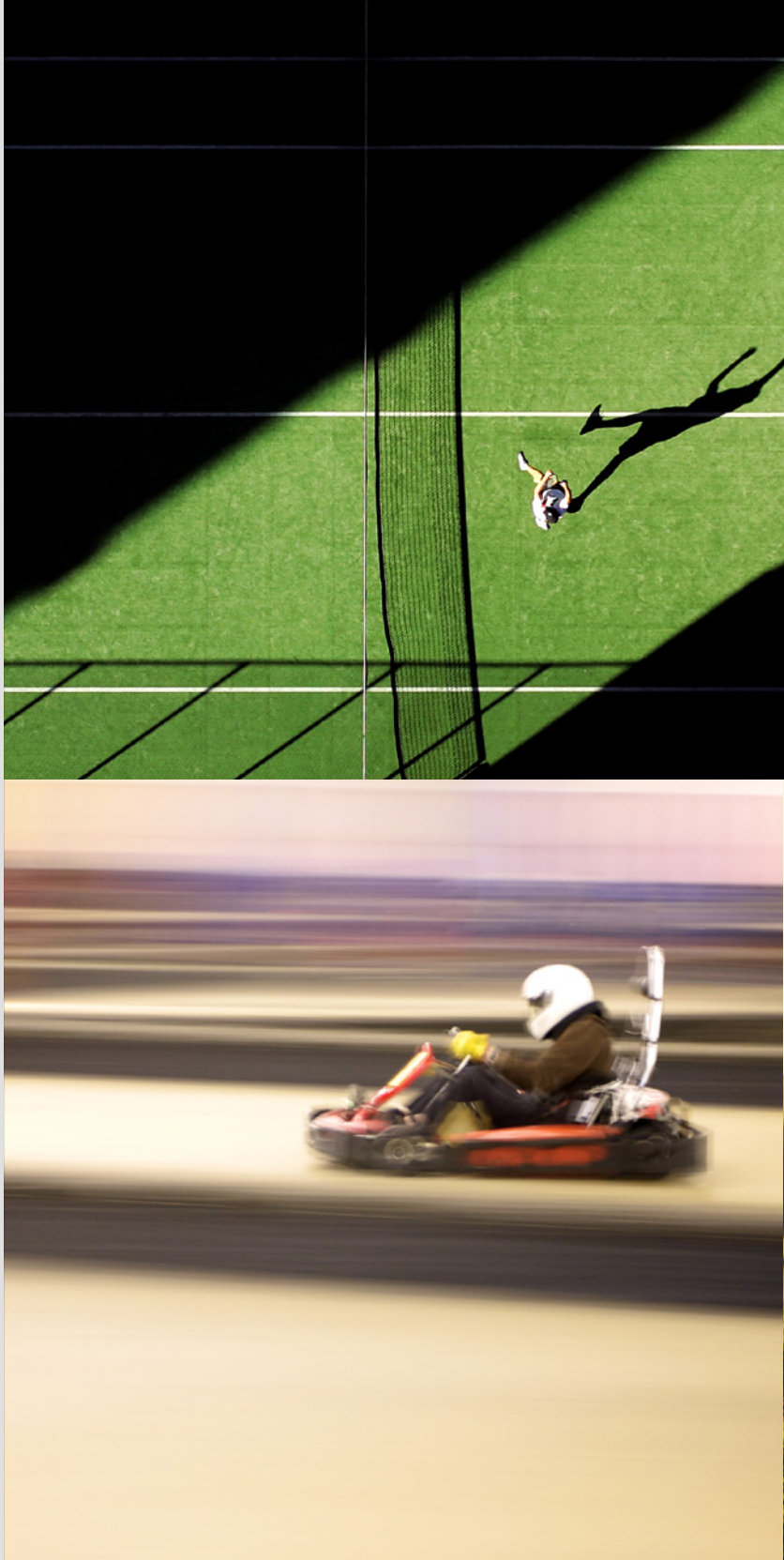


Fine tune your driving technique on the floodlit driving range at Pine Ridge Golf Club, only a 7 minute drive away.



The surroundings are beautiful and the course is challenging, varied and well maintained.

Pine Ridge Golf Club,  
Trip Advisor





6

Different gins to sample at Kingfisher on The Quay

Quirky underwater décor and stunning waterside views aren't the only draw to this vibrant pub, which serves up seasonal British favourites alongside tapas style sharing dishes, great beers, fine wines and a selection of gins.

1. Kingfisher on The Quay

6,458

Yards from the championship tee at Pine Ridge Golf Club

Golfers of all abilities can enjoy 18 holes at this popular club which winds through a picturesque pine forest and has been ranked as one of the UK's top public courses. There's also a floodlit driving range, a coaching academy and various levels of membership.

2. Pine Ridge Golf Club

24

Hectares of green space to explore at Frimley Lodge Park

The perfect spot to enjoy the great outdoors – with woodland and meadows, two children's playgrounds, a miniature railway, pitch and putt plus football and cricket pitches. There's even a café for a well-earned cuppa after all that fresh air.

3. Frimley Lodge Park

800

Metres of track at TeamSport Go Karting Farnborough

For adrenaline-filled go karting thrills head to TeamSport Farnborough, where anyone aged eight and over can race round the multi-level track in an electric kart which can reach speeds of 40mph. Can you beat the average lap time of 46 seconds?

4. TeamSport Go Karting Farnborough

4

Floodlit courts at Farnborough Lawn Tennis

New members are always welcome at this family-friendly tennis club, which offers social and competitive play all year round plus expert coaching – and if you fancy something new, you can also try your hand at fast-paced table tennis.

5. Farnborough Lawn Tennis Club

Relax,  
recharge  
and get  
active

1



2



3



4



5







# Development overview

Balancing architectural heritage with innovative design, this new development combines the traditional elements of village living with modern amenities and convenience.

A community where friends gather in the local pub, children play on the village green and there are 69 hectares of green space to explore. These purpose-built amenities are designed to serve the community, and will also include a primary school, shops, sports facilities and businesses.

Our homes are built to the very highest standard and are inspired by their natural surroundings, with most properties benefitting from private gardens or outside space plus allocated parking and cycle storage to apartments.



Full site plan

## Key

- SO Resi units
- Private units
- Social rent
- Parking
- Sheds
- Cycle store
- Bin store

The site layout is intended for illustrative purposes only and is subject to change.

So easy to  
get from A-B



Times taken from Google Maps and [nationalrail.co.uk](http://nationalrail.co.uk)







So refined &  
contemporary



# Sleek and stylish flexible living

You'll find just as much character and personality on the inside of our homes as on the outside. Generous living spaces with light and airy interiors are finished to the highest specification, with modern kitchens, sleek bathrooms and clever storage solutions.

Neutral décor allows you to settle in straight away, or put your own stamp on the interior if you prefer. Either way, each of our SO Resi homes are thoughtfully designed to suit your lifestyle, offering convenience and comfort in equal measure.

## General

Amtico flooring to kitchen, WC and bathroom (to houses)

Amtico flooring to kitchen, WC and bathroom and open plan living / dining areas (to apartments)

Neutral wool mix carpet to all other areas

Provision for Sky Plus (subject to subscription)

Phone points to living room and master bedroom

## Security & peace of mind

Access to apartments via video entry system

Mains operated, ceiling mounted smoke, heat and carbon monoxide detectors with battery back up

## Kitchen

Fully fitted modern kitchens

Built in single oven, 4 burner gas hob and chimney hood

Built in appliances including fridge freezer, dish washer and washer dryer

Laminate worktops with matching upstands

1 & 1/2 bowl stainless steel sink

LED downlights

Soft close mechanisms to all doors and drawers

Semi-recessed cabinet lighting

## Bathroom

Contemporary bathroom suite with white sanitaryware

Ceramic tiles to bathroom

Folding bath screen

Bevelled edged mirror installed

Shaver socket

Chrome ladder towel radiators

LED downlights

## External

Landscaped front and rear gardens to houses

Allocated parking

1x cycle rack per apartment located within the bike store in each block

French doors to balcony or patio for all apartments



Images are from previous SO Resi home is for illustrative purposes only and purchasers should not rely on these images.





Plots  
7  
8\*

Room	Metric	Imperial
Living room & Kitchen	6.75m x 6.11m	22'1" x 20'0"
Bedroom 1	3.65m x 4.04m	11'11" x 13'3"
Bedroom 2	3.03m x 3.51m	9'11" x 11'6"
GIA	72.78 m <sup>2</sup>	783 ft <sup>2</sup>

- S

Storage
- F

Fridge freezer
- D

Dishwasher
- W

Washer dryer
- B

Boiler
- +

Wardrobe
- \* Mirrored plot

All floor plans in this brochure are for general guidance only. All room dimensions are subject to a plus/minus 5% tolerance. Measures are from plans and "as built" dimensions may vary. Any dimensions shown are not intended to be used for carpet sizes, appliances, spaces or items of furniture. These particulars do not constitute any part of an offer or contract.



Plots  
9  
10\*

Room	Metric	Imperial
Living room & Kitchen	5.00m x 6.93m	16'4" x 22'8"
Bedroom 1	4.52m x 3.18m	14'9" x 10'5"
Bedroom 2	3.13m x 3.66m	10'3" x 12'0"
GIA	72.19 m <sup>2</sup>	777 ft <sup>2</sup>

- S

Storage
- F

Fridge freezer
- D

Dishwasher
- W

Washer dryer
- B

Boiler
- +

Wardrobe
- \* Mirrored plot





Type 3

2 Bedroom Apartment



Second floor



Plots  
11  
12\*

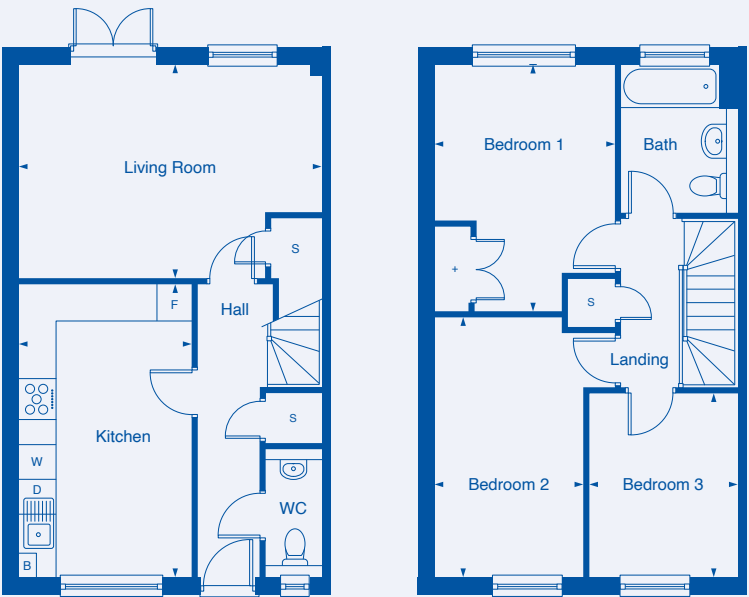
Room	Metric	Imperial
Living room & Kitchen	5.00m x 6.90m	16'4" x 22'7"
Bedroom 1	3.82m x 3.21m	12'6" x 10'6"
Bedroom 2	3.13m x 4.19m	10'3" x 13'8"
GIA	67.30 m <sup>2</sup>	724 ft <sup>2</sup>

- S Storage
- F Fridge freezer
- D Dishwasher
- W Washer dryer
- B Boiler
- + Wardrobe
- Skylight
- Skelling line
- \* Mirrored plot

All floor plans in this brochure are for general guidance only. All room dimensions are subject to a plus/minus 5% tolerance. Measures are from plans and "as built" dimensions may vary. Any dimensions shown are not intended to be used for carpet sizes, appliances, spaces or items of furniture. These particulars do not constitute any part of an offer or contract.

Type 4

3 Bedroom House



Ground

First



Plots  
72\*  
73

Room	Metric	Imperial
Living room	5.24m x 3.71m	17'2" x 12'2"
Kitchen	3.02m x 5.07m	9'10" x 16'7"
Bedroom 1	3.14m x 4.29m	10'3" x 14'0"
Bedroom 2	2.59m x 4.49m	8'5" x 14'8"
Bedroom 3	2.59m x 3.19m	8'5" x 10'5"
GIA	93.08 m <sup>2</sup>	1002 ft <sup>2</sup>

- S Storage
- F Fridge freezer
- D Dishwasher
- W Washer dryer
- B Boiler
- + Wardrobe
- \* Mirrored plot

All floor plans in this brochure are for general guidance only. All room dimensions are subject to a plus/minus 5% tolerance. Measures are from plans and "as built" dimensions may vary. Any dimensions shown are not intended to be used for carpet sizes, appliances, spaces or items of furniture. These particulars do not constitute any part of an offer or contract.





**With SO Resi, you buy your own home in your own way. You start with a share that's right for you, then you can buy extra shares over time, so it's all manageable and suits your income.**

You start by buying between 25% and 75% of your SO Resi home. That means your monthly mortgage payments and deposit are smaller than they would be if you bought your home outright. There are two other monthly payments for your SO Resi home. One is the SO Resi payment for the share of your home that Metropolitan Thames Valley owns. The other is the service charge, which pays to look after the building you live in. There are also the usual other costs, like household utility bills. You can choose to buy a bigger share of your SO Resi home in the future, and even own 100%. The bigger the share you own, the lower your SO Resi payment will be.

**You can sell your share at any time if you decide to move on.**

#### **We're here to help**

Whatever your needs, we're on hand to help at every stage. First we'll help you understand all the costs and work out what's affordable for you. If you decide to go ahead, we'll be there to answer your questions. And in the future, we can help you with buying a bigger share of your home, or with selling up if it's time for a change.

**Email [sales@soresi.co.uk](mailto:sales@soresi.co.uk)  
or visit [www.soresi.co.uk](http://www.soresi.co.uk)**

#### **Working in partnership with**



MTVH has taken all reasonable care in the preparation of the information given in this brochure. However, this information is subject to change and has been prepared solely for the purpose of providing general guidance. MTVH does not warrant the accuracy or completeness of this information. Particulars are given for illustrative purposes only. MTVH undertakes continuous product development and any information given relating to our products may vary from time to time. The information and particulars set out within this brochure do not constitute part of a formal offer invitation or contract to acquire the relevant property. For the reasons mentioned above, no information contained in this brochure is to be relied upon. In particular, all plans prospectus, descriptions, dimensions and measurements are approximate and provided for guidance only. Such information is given without responsibility on the part of MTVH.



