



1, 2 and 3 bedroom apartments

Phase 1

## Wembley Parade at Anthology

North End Road,  
Wembley, London  
HA9 0LU

---

## Great homes, great location

---

[www.homegroup.org.uk](http://www.homegroup.org.uk)





# New homes to build new memories

A stunning collection of 1, 2 and 3 bedroom apartments boasting breath-taking views in the centre of Wembley.

Perfectly situated, Anthology Wembley Parade offers generous, contemporary designed spaces where you'll discover double sized bedrooms and a spacious, open plan kitchen and living area with full-height windows that lead on to the balcony. With plenty of integrated storage, clutter can be kept to a minimum.

The gardens and landscaping at Wembley Parade comprise of lush green planting, junior trees, border planters and open spaces suitable for both relaxation and play.

With excellent transport links it's easy to get from Wembley to Central London. Wembley Park station is only a 4 minute walk away from your new home. North West of Central London, Wembley has been hosting major sporting, cultural and music events that attract visitors from all over the world.

The multicultural nature of Wembley reaches its peak of visibility at the annual Holi Festival, and Concerts by internationally recognised acts, world class sport events, premium shopping destinations, historic parks and nature reserves – Wembley offers something for everyone.





# Perfectly situated


- Less than a 5 minute walk from Wembley Park Station
- Close proximity to a selection of nurseries, primary and secondary schools, sixth form colleges and universities.
- King Edward VII Park is equipped with tennis courts and an outdoor gym that is free to use.


 Shops

 Cafe/restaurant

 Bar/pub

 Schools

 Gym/leisure centre

 Station



London Designer Outlet	Tesco	Chalk Hill Primary School
0.5miles	1.2miles	0.2miles
Wembley Stadium	IKEA	Michaela Community School
0.6miles	1.4miles	0.2miles



# Getting around

With excellent transport links it's easy to get from Wembley to Central London. Wembley Park station is only a 4 minute walk away from Wembley Parade and has direct connections to Kings Cross, Liverpool Street, Paddington, London Bridge and Canary Wharf via the Metropolitan and Jubilee Lines.



## Air travel

Miles

### Heathrow

14.8 miles

### Gatwick

43.3miles

### Luton

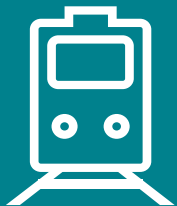
30.5 miles

### London City

20 miles

### Stanstead

41.0 miles



## Underground

Minutes

From Wembley Park:

### Baker Street

14 minutes

### Kings Cross St. Pancras

21 minutes

### Euston

23 minutes

### Oxford Circus

23minutes

### Liverpool Street

30 minutes



## By road

Miles

### M1

4 miles

### M25

13.6 miles

### A406

1.7 miles

### A40

4.2 miles

Journey times and distances taken from Transport for London and Google maps and are correct before going to print. All times and distances listed are approximate and may vary depending on time of travel.

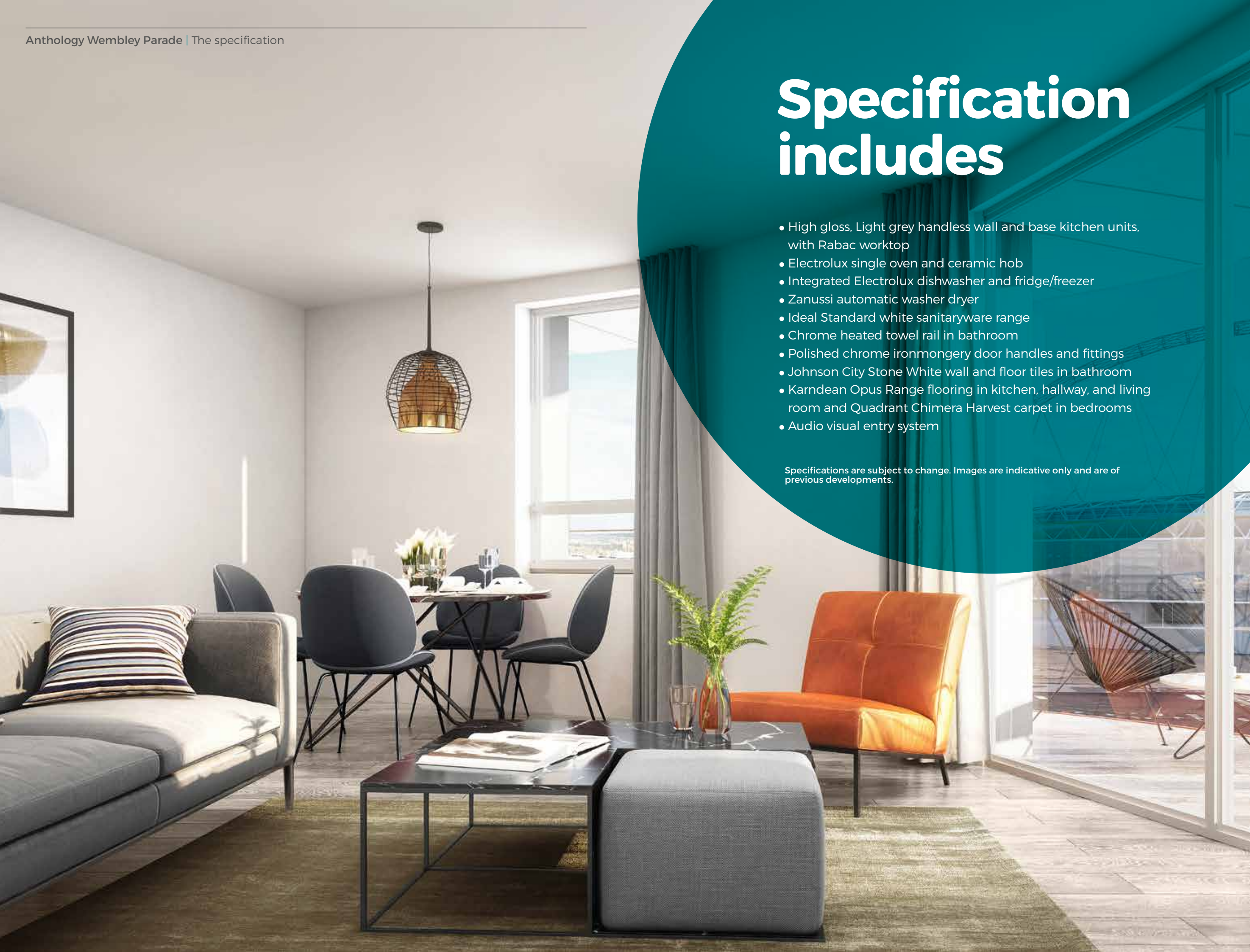




# Specification includes

- High gloss, Light grey handleless wall and base kitchen units, with Rabac worktop
- Electrolux single oven and ceramic hob
- Integrated Electrolux dishwasher and fridge/freezer
- Zanussi automatic washer dryer
- Ideal Standard white sanitaryware range
- Chrome heated towel rail in bathroom
- Polished chrome ironmongery door handles and fittings
- Johnson City Stone White wall and floor tiles in bathroom
- Karndean Opus Range flooring in kitchen, hallway, and living room and Quadrant Chimera Harvest carpet in bedrooms
- Audio visual entry system

Specifications are subject to change. Images are indicative only and are of previous developments.



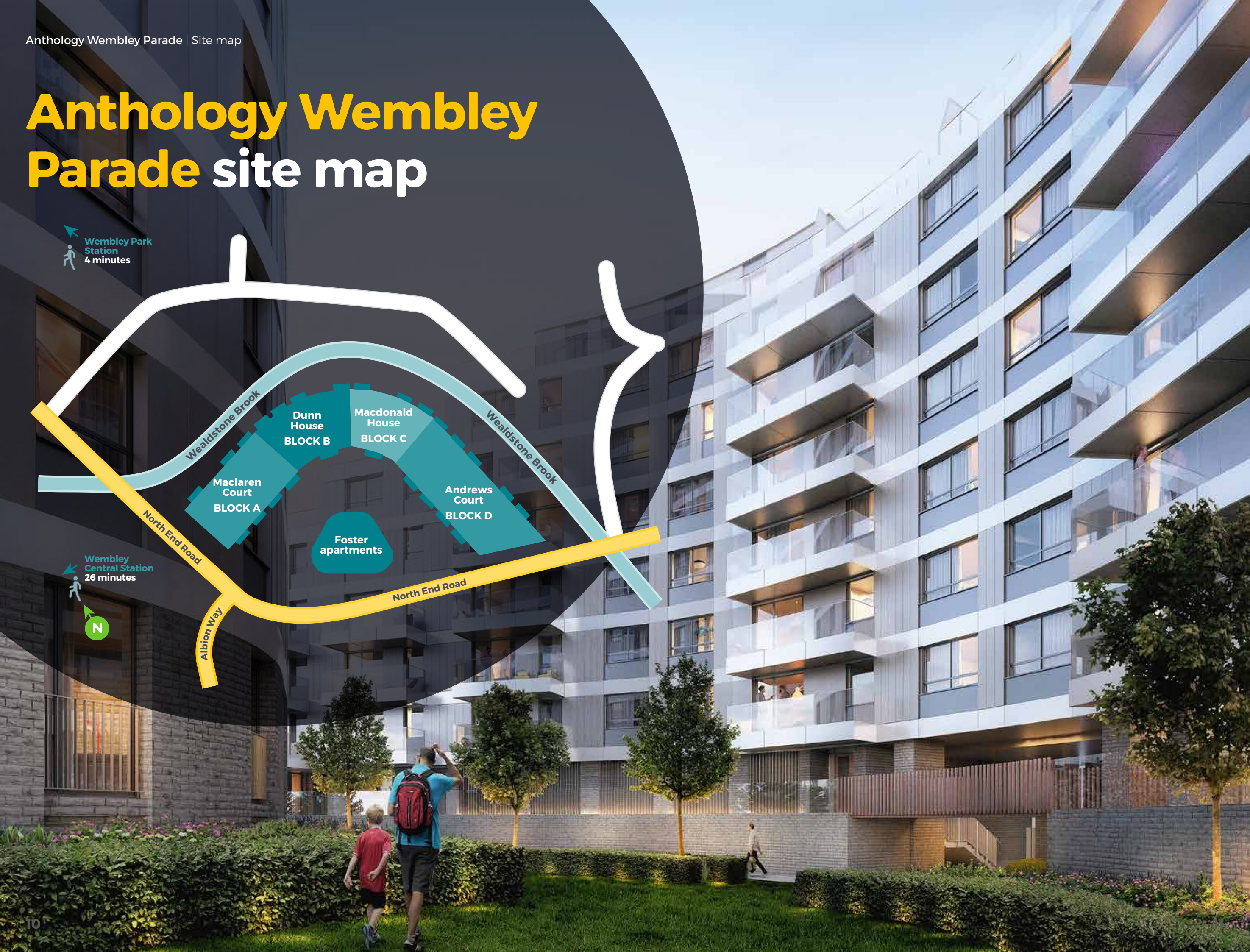
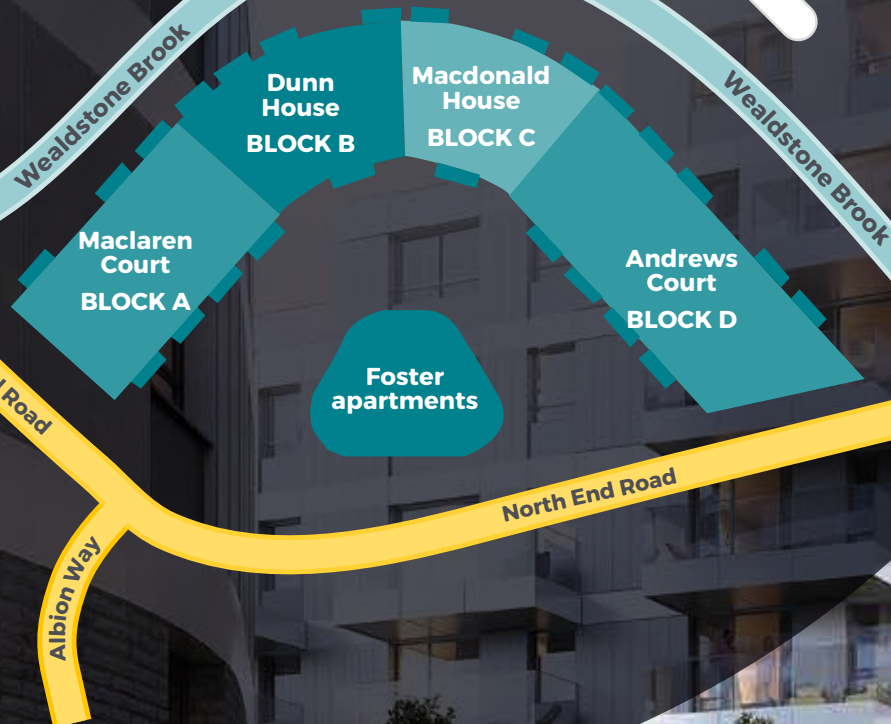


# Anthology Wembley Parade site map

Wembley Park  
Station  
4 minutes

Wembley  
Central Station  
26 minutes

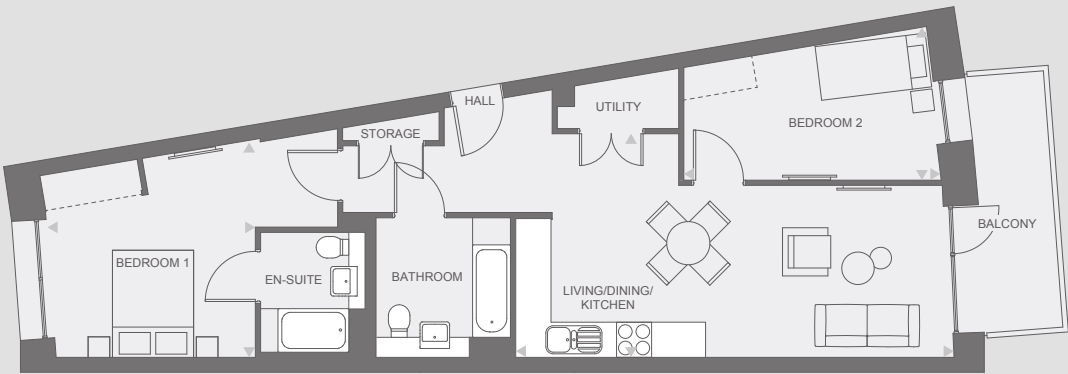
N





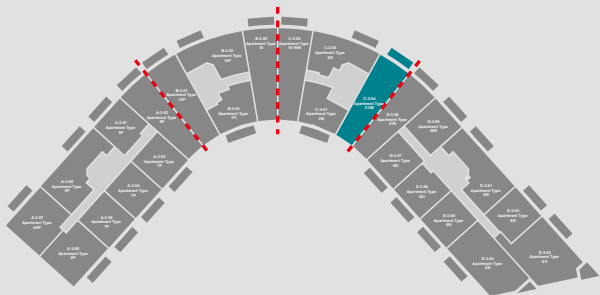
# Anthology, Wembley Parade – phase 1

## Block C, third floor, plot C304 – 2 bedroom

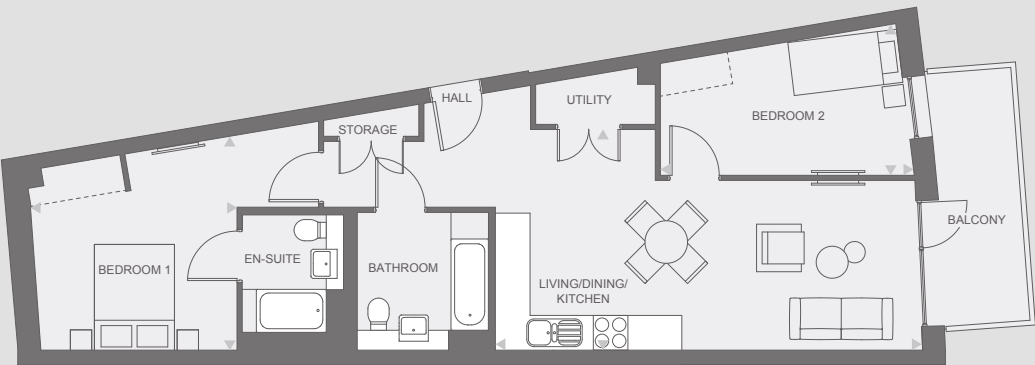


### Measurements

Kitchen/Dining area	6.54m x 5.68m
Lobby	6.49m x 2.15m
Bedroom 1	5.42m x 3.90m
Bedroom 2	4.62m x 2.75m
Bathroom 1	2.20m x 1.90m
Bathroom 2	2.69m x 2.47m
Store room	1.75m x 0.23m
Utility room	2.20m x 0.780m
Balcony	4.60m x 1.80m

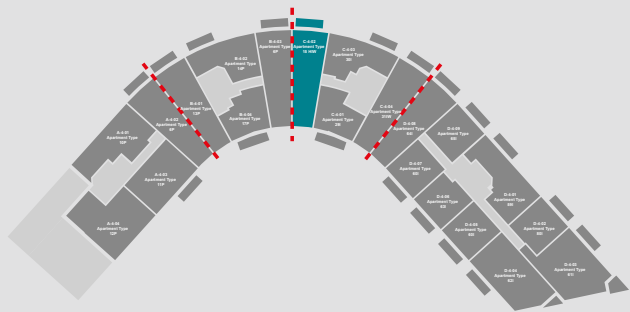


## Block C, fourth floor, plot C402 – 2 bedroom



### Measurements

Kitchen/Dining area	8.80m x 2.90m
Lobby	4.77m x 1.96m
Bedroom 1	4.65m x 2.10m
Bedroom 2	4.65m x 2.10m
Bathroom	2.29m x 2.10m
Store room	1.59m x 1.18m
Utility room	1.72m x 1.18m
Balcony	4.65m x 1.80m

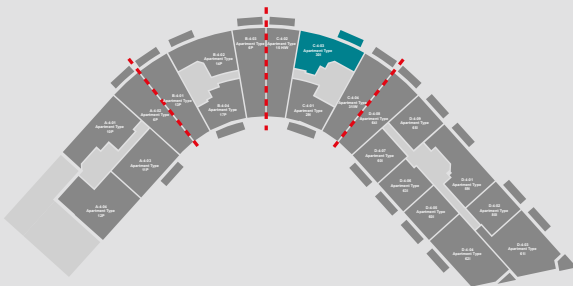


## Block C, fourth floor, plot C403 – 2 bedroom

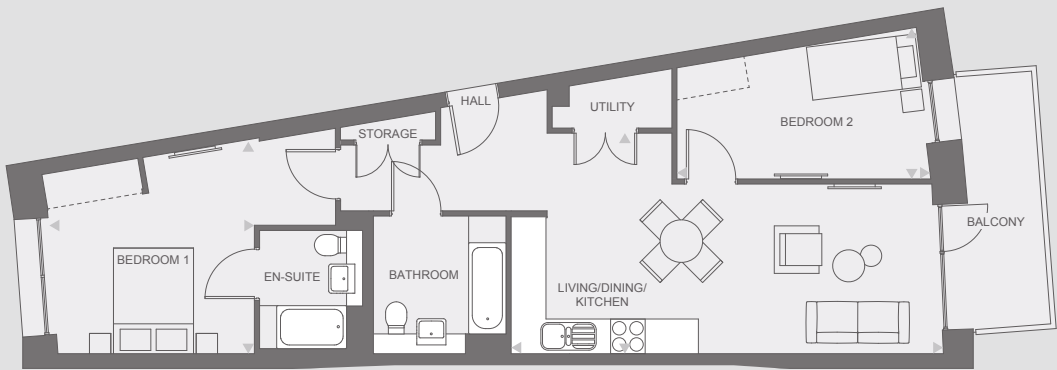


### Measurements

Kitchen/Dining area	5.50m x 3.80m
Lobby	5.66m x 1.08m
Bedroom 1	4.90m x 2.92m
Bedroom 2	3.70m x 2.90m
Bathroom	2.20m x 2.10m
Store room	1.73m x 1.30m
Utility room	2.00m x 0.80m
Balcony	4.70m x 1.80m

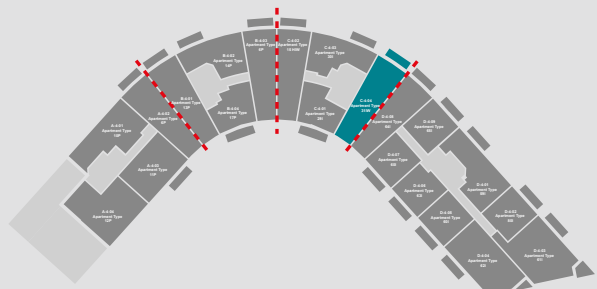


## Block C, fourth floor, plot C404 – 2 bedroom

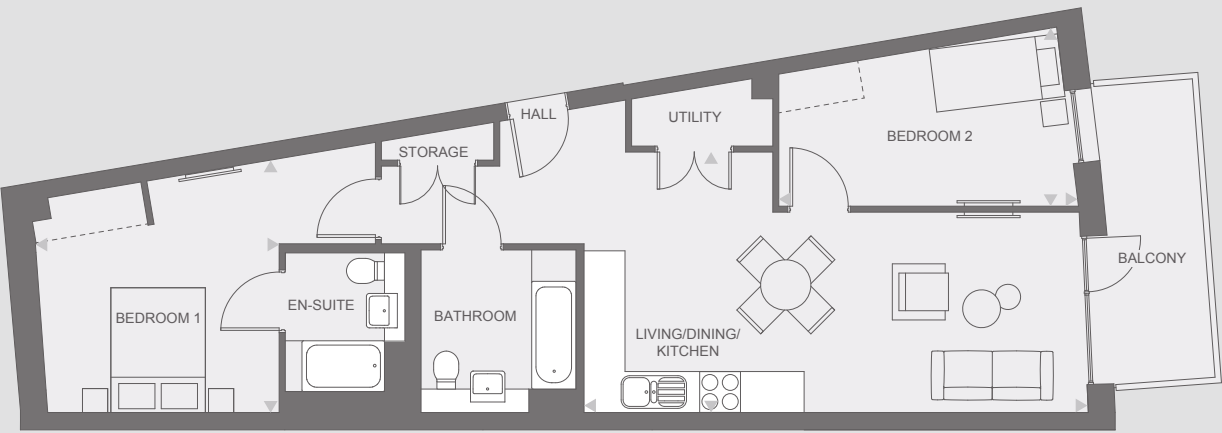


### Measurements

Kitchen/Dining area	6.54m x 5.68m
Lobby	6.49m x 2.15m
Bedroom 1	5.42m x 3.90m
Bedroom 2	4.62m x 2.75m
Bathroom 1	2.20m x 1.90m
Bathroom 2	2.69m x 2.47m
Store room	1.75m x 0.23m
Utility room	2.20m x 0.780m
Balcony	4.60m x 1.80m

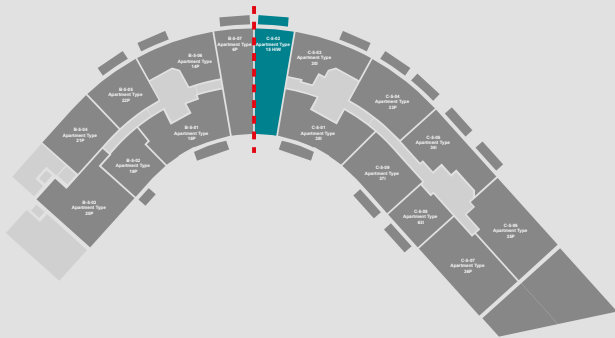


Block C, fifth floor, plot C502 – 2 bedroom

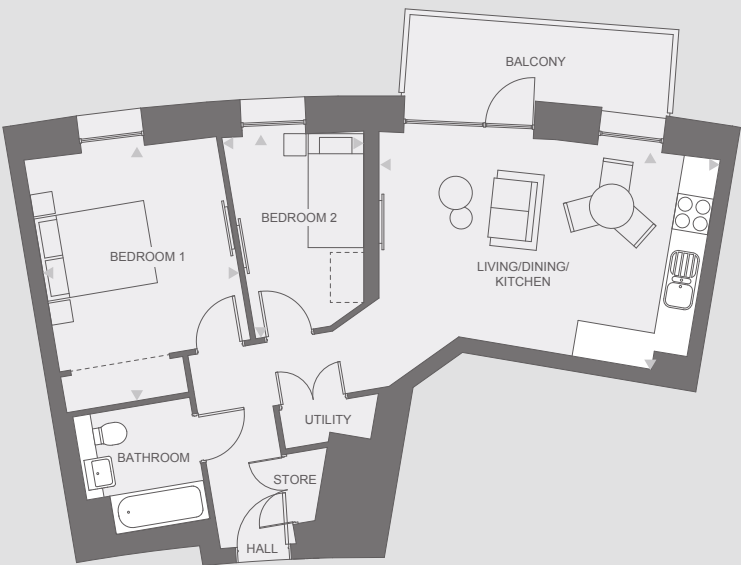


Measurements

Kitchen/Dining area	8.80m x 2.90m
Lobby	4.77m x 1.96m
Bedroom 1	4.65m x 2.10m
Bedroom 2	4.65m x 2.10m
Bathroom	2.29m x 2.10m
Store room	1.59m x 1.18m
Utility room	1.72m x 1.18m
Balcony	4.65m x 1.80m

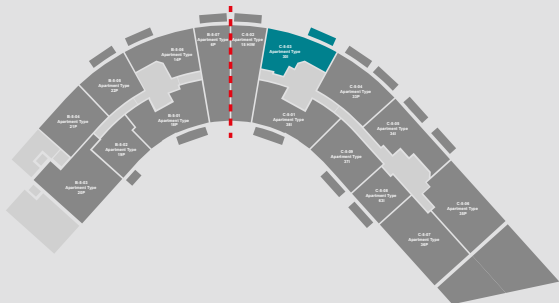


Block C, fifth floor, plot C503 – 2 bedroom

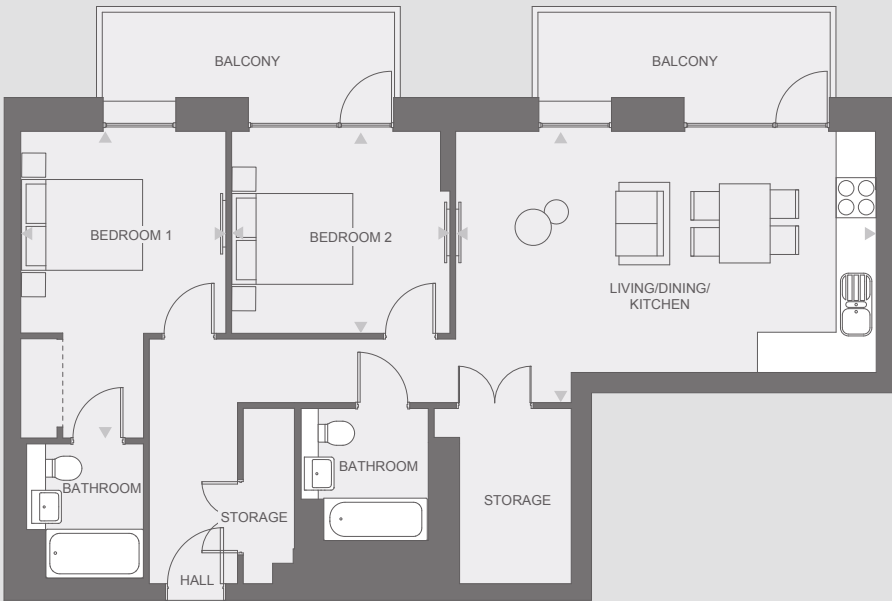


Measurements

Kitchen/Dining area	5.50m x 3.80m
Lobby	5.66m x 1.08m
Bedroom 1	4.90m x 2.92m
Bedroom 2	3.70m x 2.90m
Bathroom	2.20m x 2.10m
Store room	1.73m x 1.30m
Utility room	2.00m x 0.80m
Balcony	4.70m x 1.80m

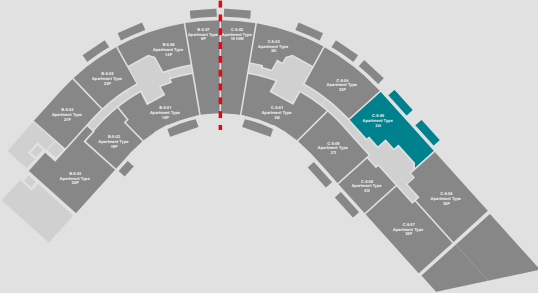


Block C, fifth floor, plot C505 – 2 bedroom

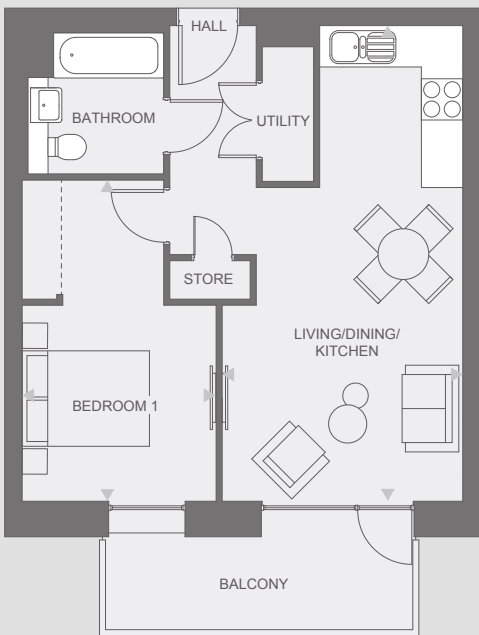


Measurements

Kitchen/Dining area	6.75m x 3.80m
Lobby	3.95m x 1.40m
Bedroom 1	4.90m x 3.30m
Bedroom 2	3.50m x 3.20m
Bathroom 1	2.20m x 1.90m
Bathroom 2	2.20m x 2.10m
Store room 1	2.80m x 0.85m
Store room 2	2.20m x 0.50m
Balcony 1	4.70m x 1.80m
Balcony 2	4.70m x 1.80m

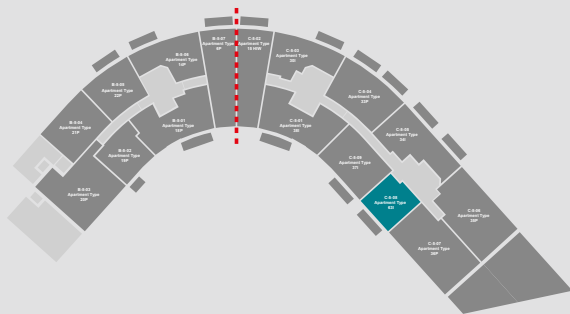


Block C, fifth floor, plot C508 – 1 bedroom



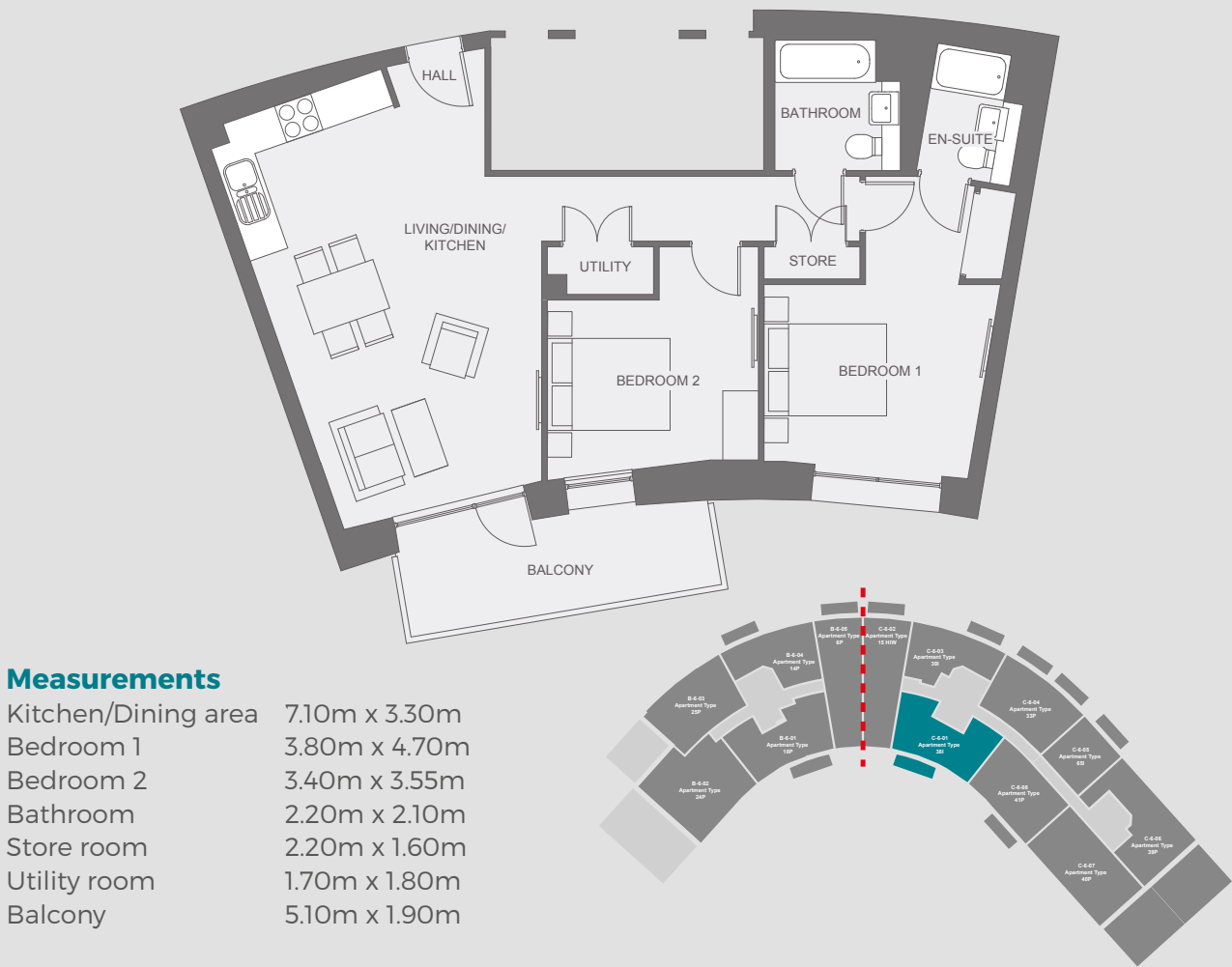
Measurements

Kitchen/Dining area	6.85m x 3.35m
Bedroom 1	3.65m x 3.30m
Bathroom	2.20m x 2.10m





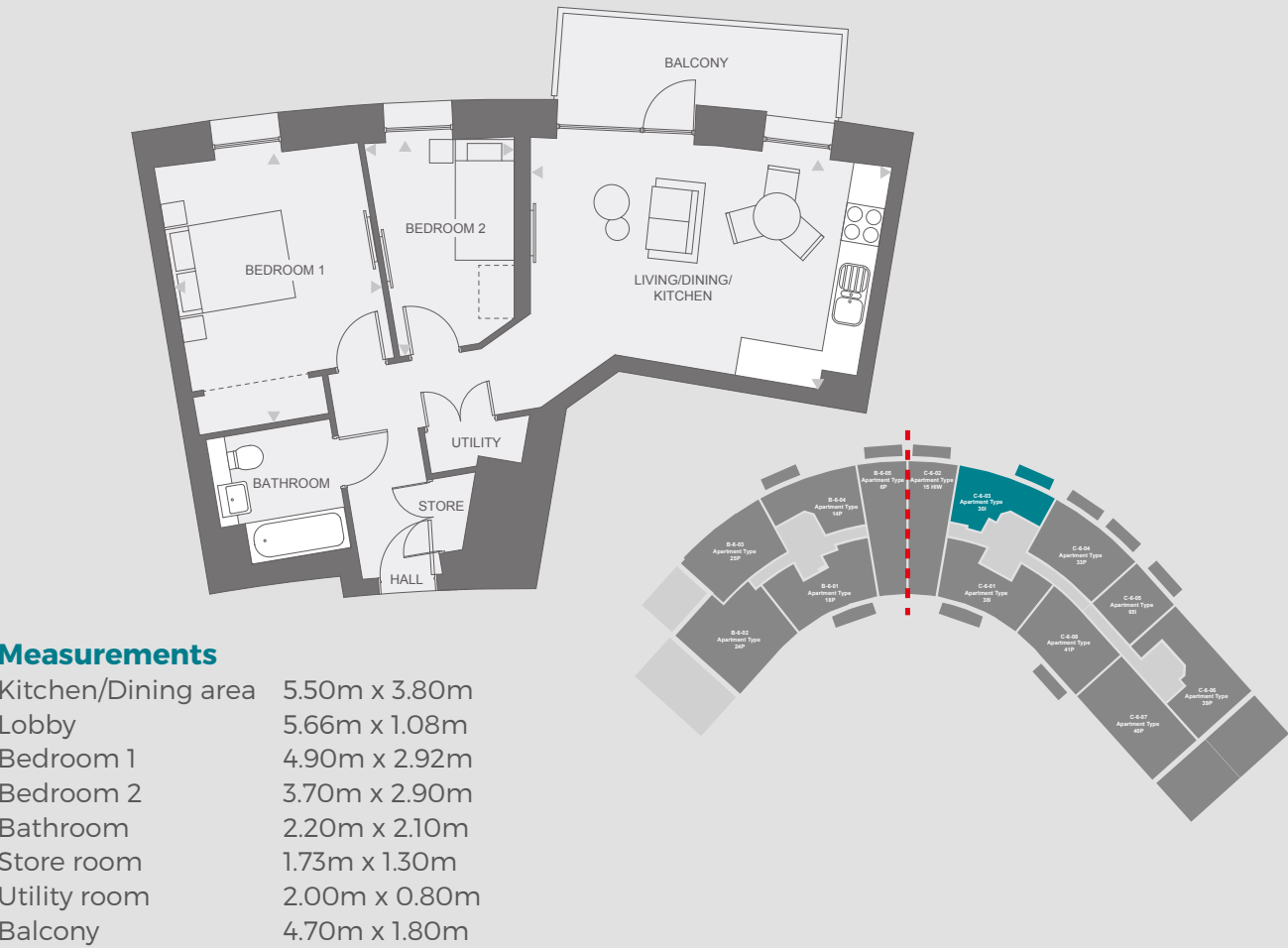
Block C, sixth floor, plot C601 – 2 bedroom



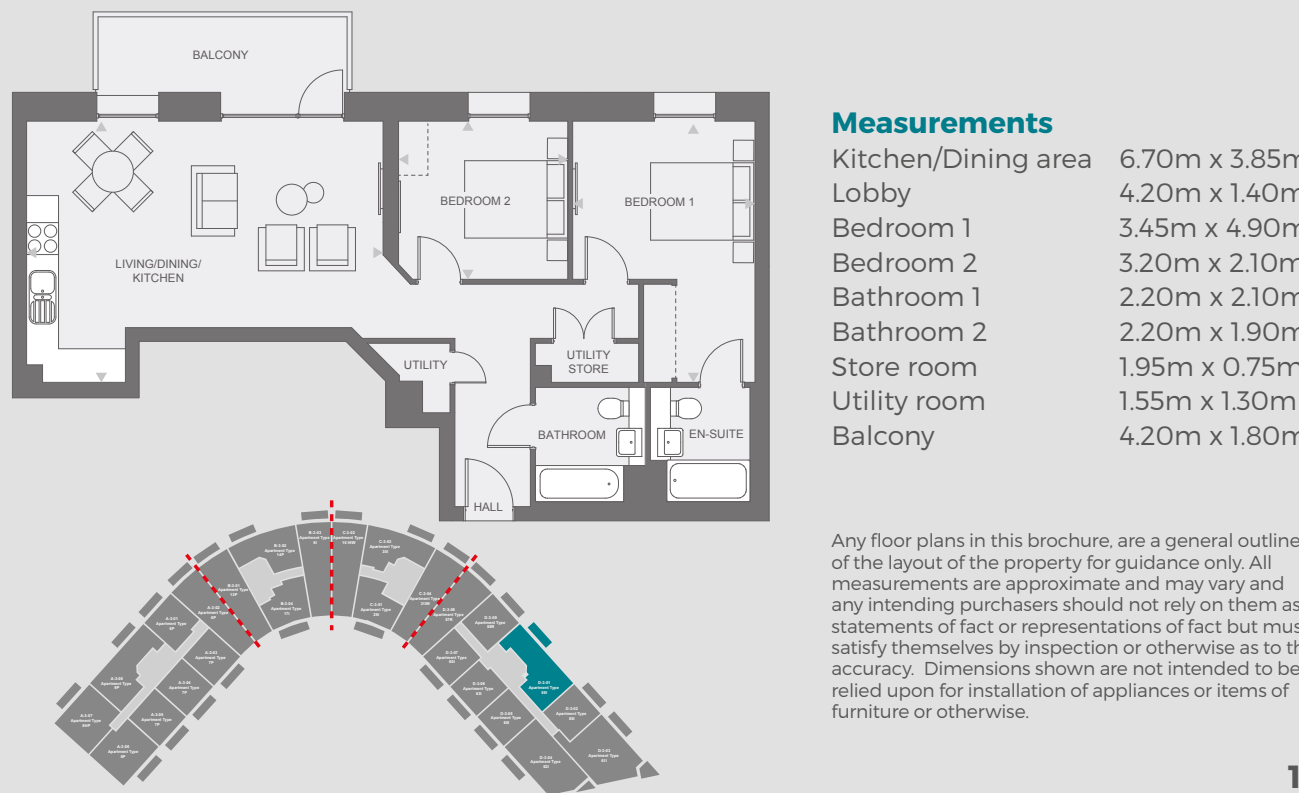
Block C, sixth floor, plot C602 – 2 bedroom



Block C, sixth floor, plot C603 – 2 bedroom

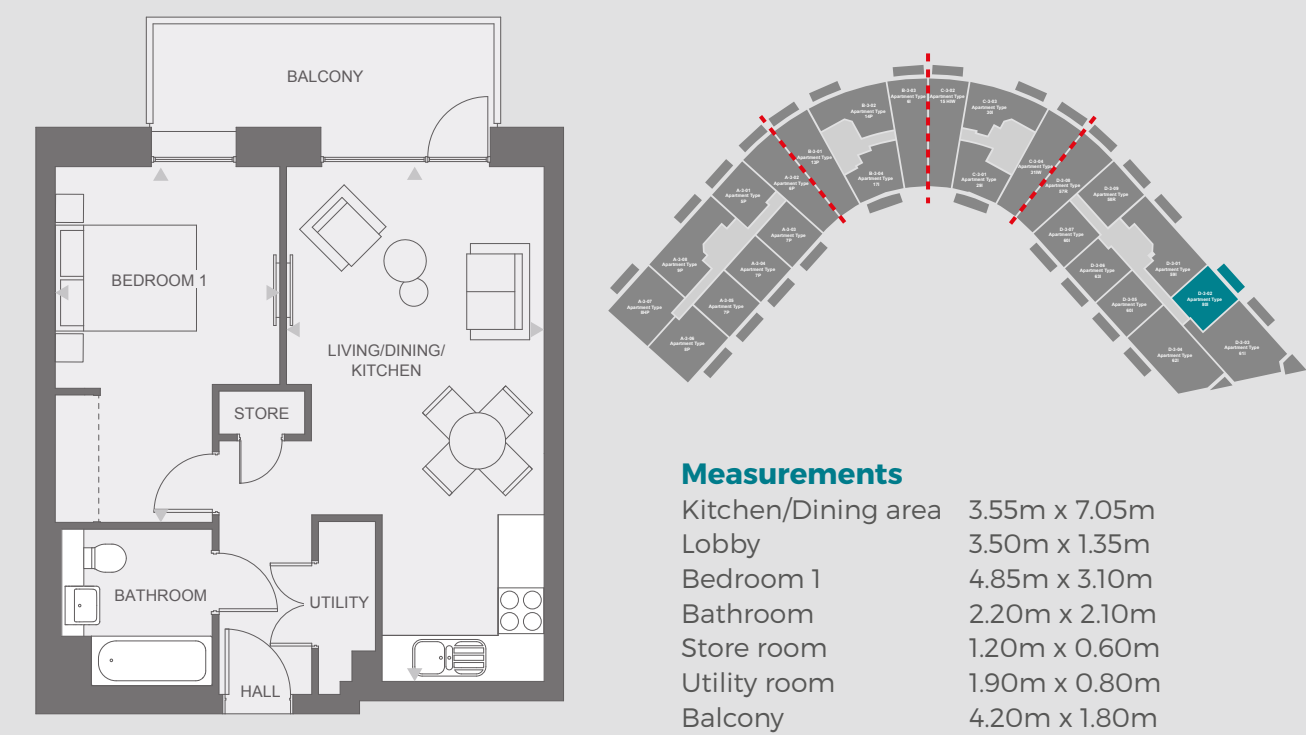


Block D, third floor, plot D301 – 2 bedroom

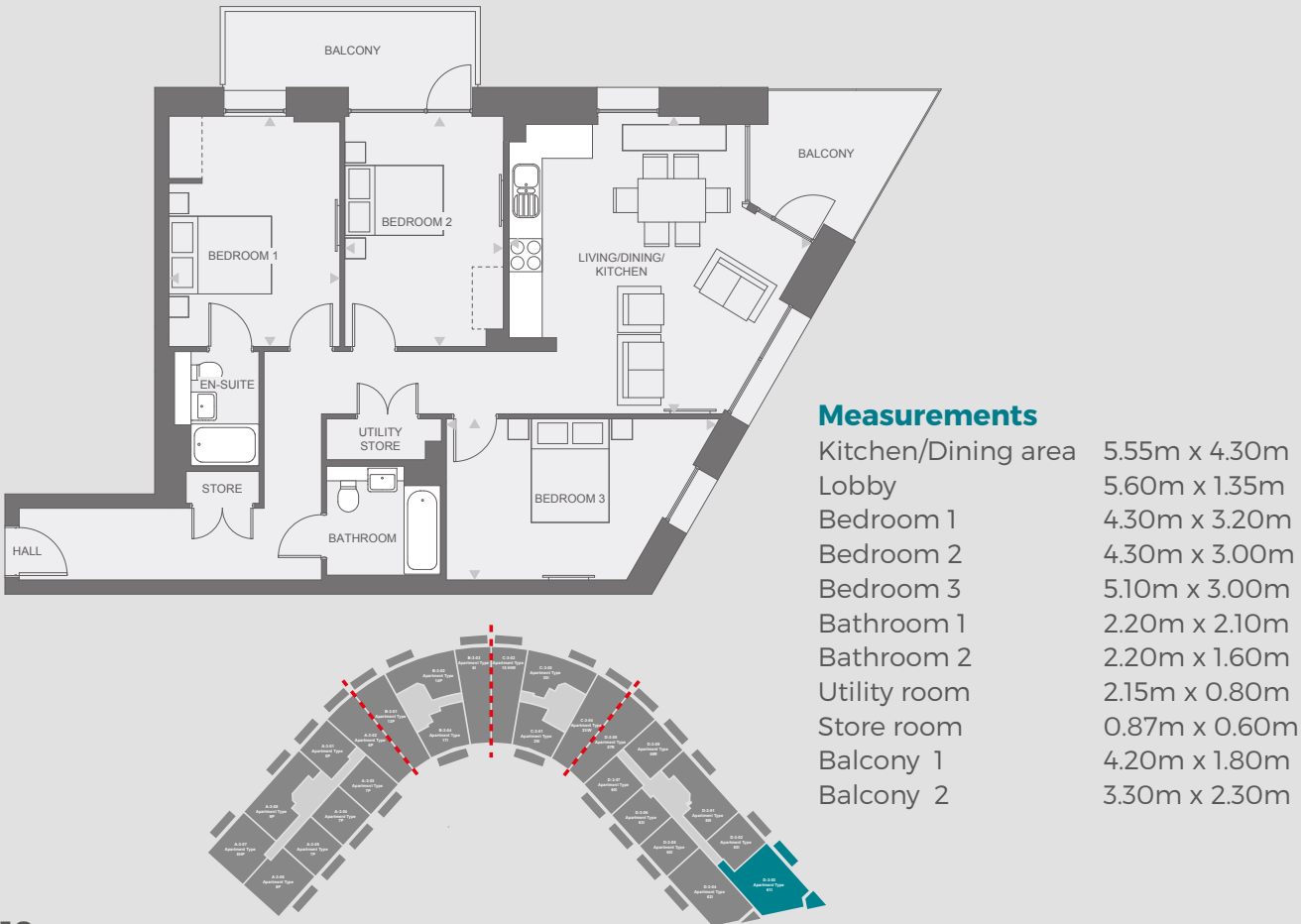




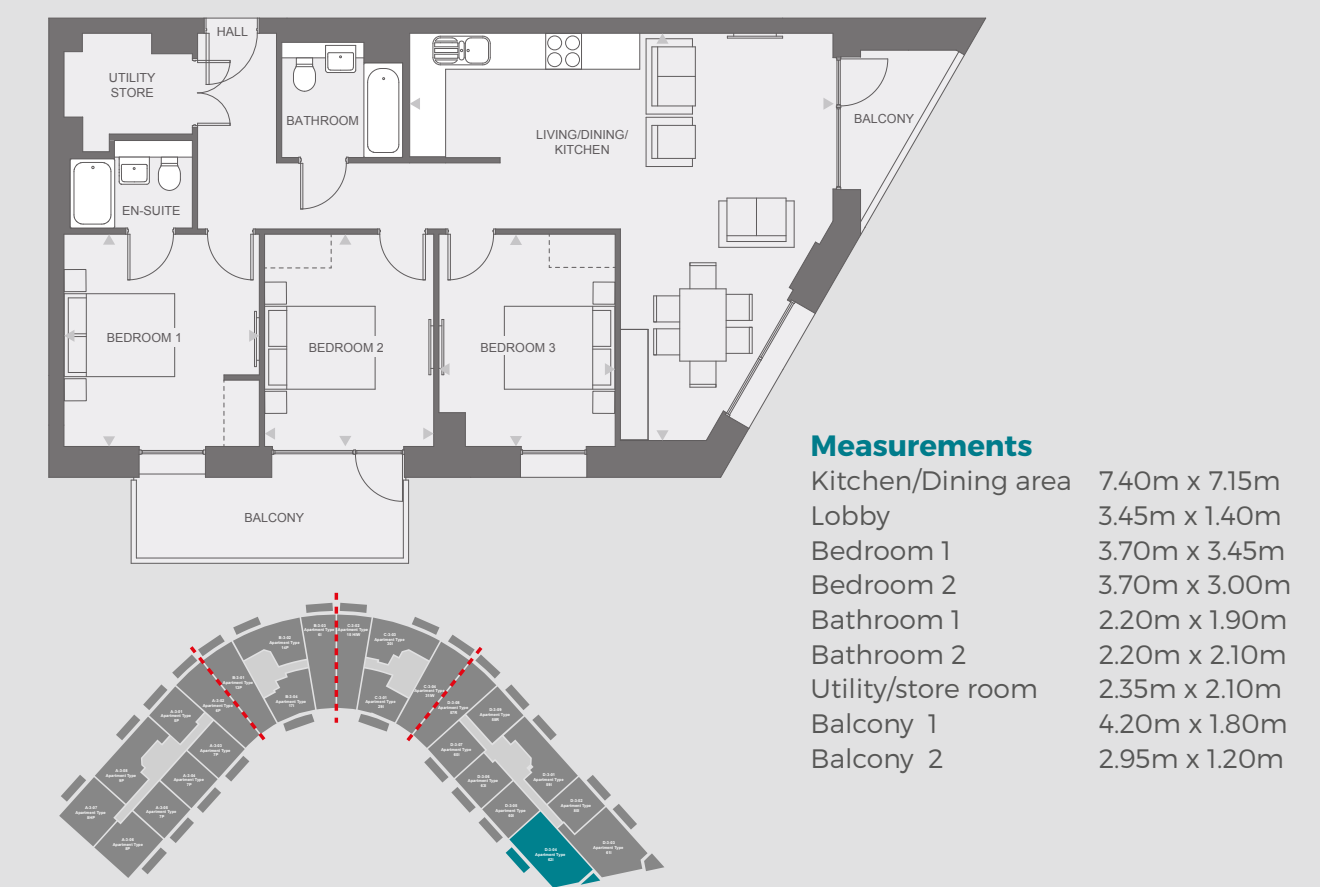
Block D, third floor, plot D302 – 1 bedroom



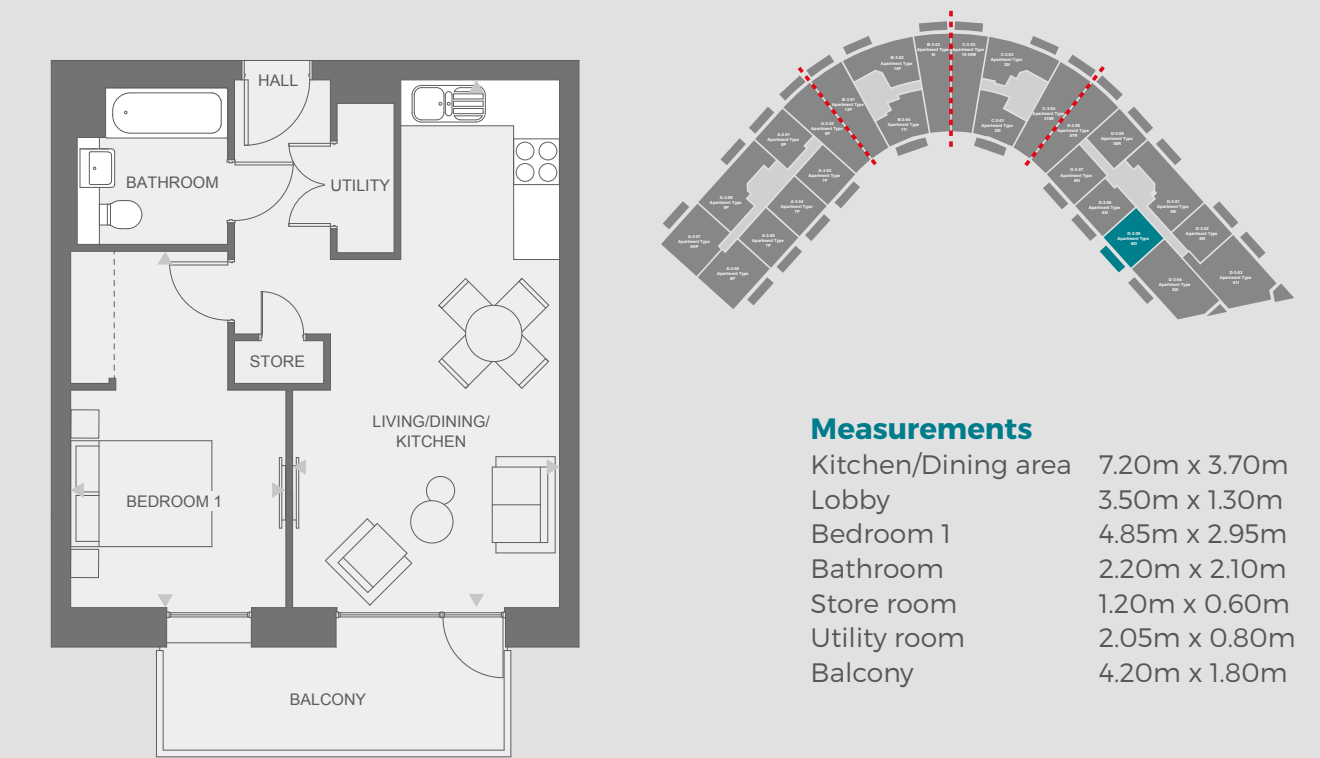
Block D, third floor, plot D303 – 3 bedroom



Block D, third floor, plot D304 – 3 bedroom

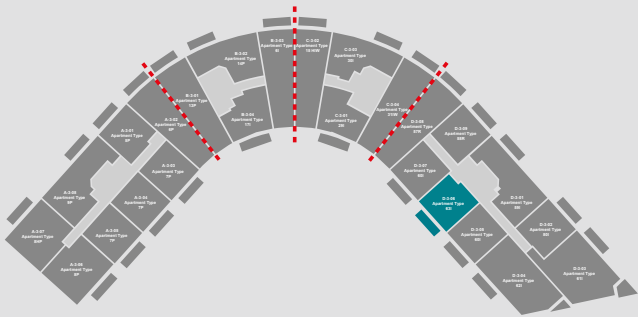
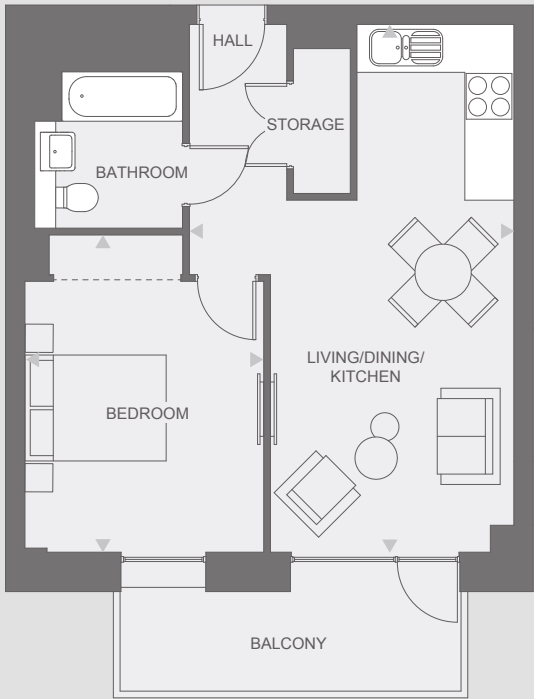


Block D, third floor, plot D305 – 1 bedroom





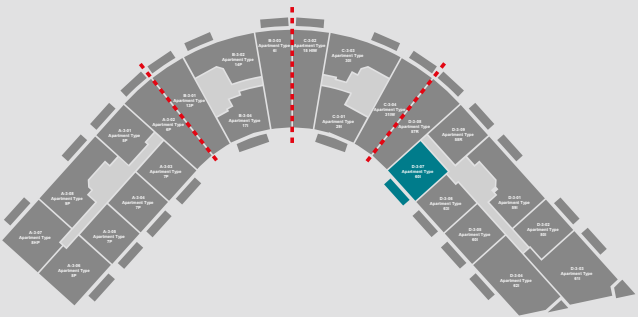
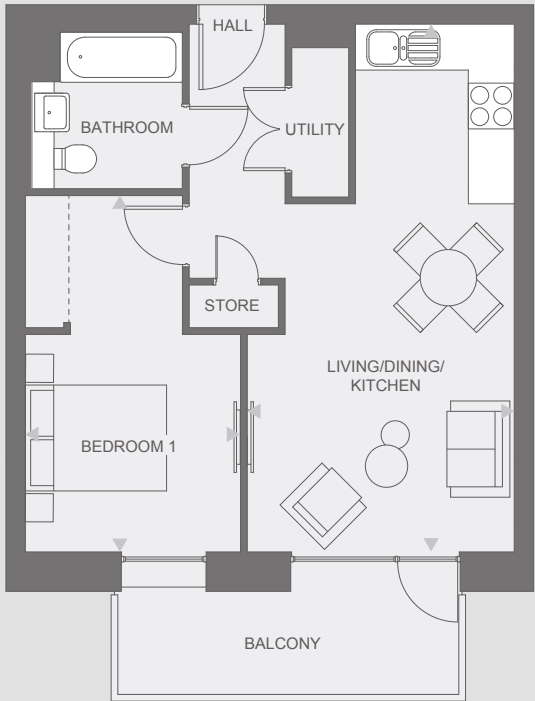
Block D, third floor, plot D306 – 1 bedroom



**Measurements**

Kitchen/Dining area	6.85m x 3.35m
Lobby	3.40m x 1.35m
Bedroom 1	3.65m x 3.30m
Bathroom	2.20m x 2.10m
Store room	2.00m x 0.80m
Balcony	4.20m x 1.80m

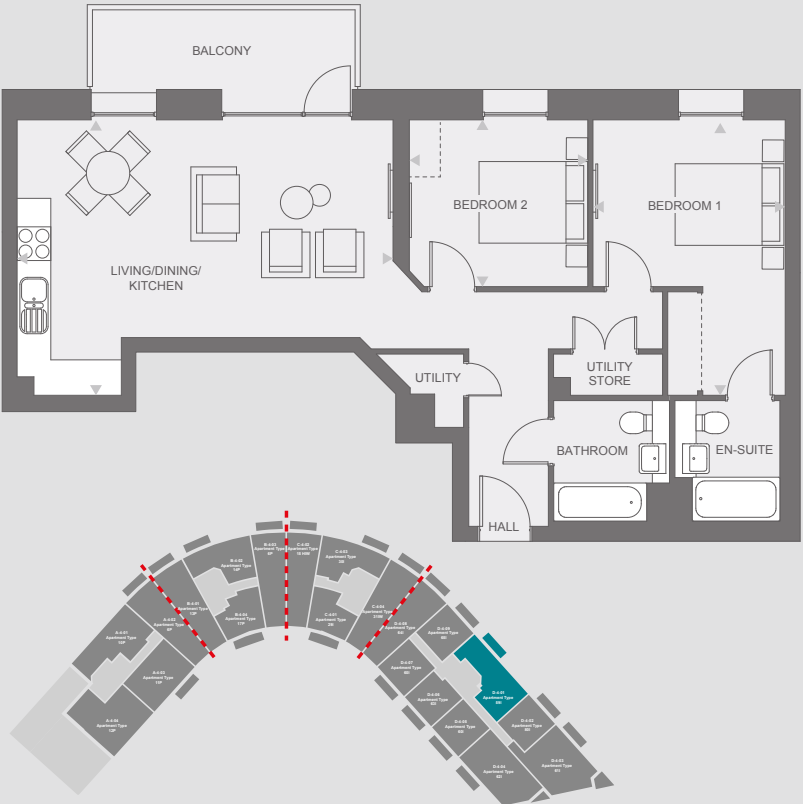
Block D, third floor, plot D307 – 1 bedroom



**Measurements**

Kitchen/Dining area	7.20m x 3.70m
Lobby	3.50m x 1.30m
Bedroom 1	4.85m x 2.95m
Bathroom	2.20m x 2.10m
Store room	1.20m x 0.60m
Utility room	2.05m x 0.80m
Balcony	4.20m x 1.80m

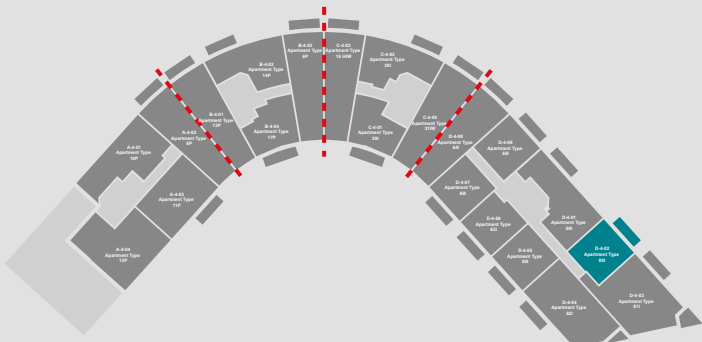
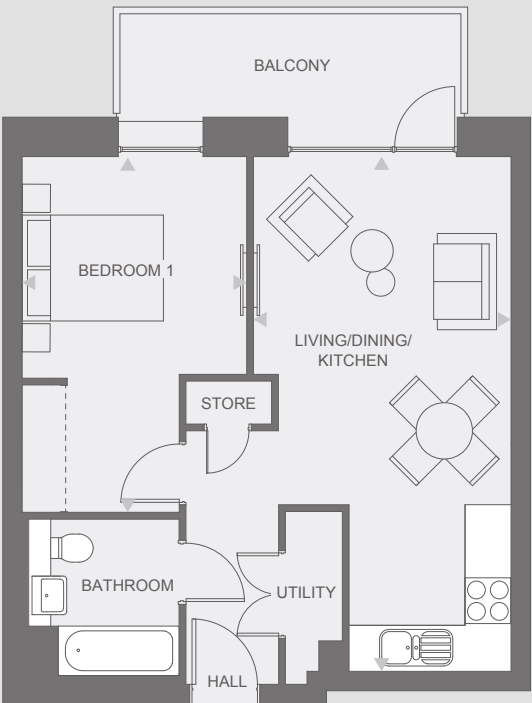
Block D, fourth floor, plot D401 – 2 bedroom



**Measurements**

Kitchen/Dining area	6.70m x 3.85m
Lobby	4.20m x 1.40m
Bedroom 1	3.45m x 4.90m
Bedroom 2	3.20m x 2.10m
Bathroom 1	2.20m x 2.10m
Bathroom 2	2.20m x 1.90m
Store room	1.95m x 0.75m
Utility room	1.55m x 1.30m
Balcony	4.20m x 1.80m

Block D, fourth floor, plot D402 – 1 bedroom



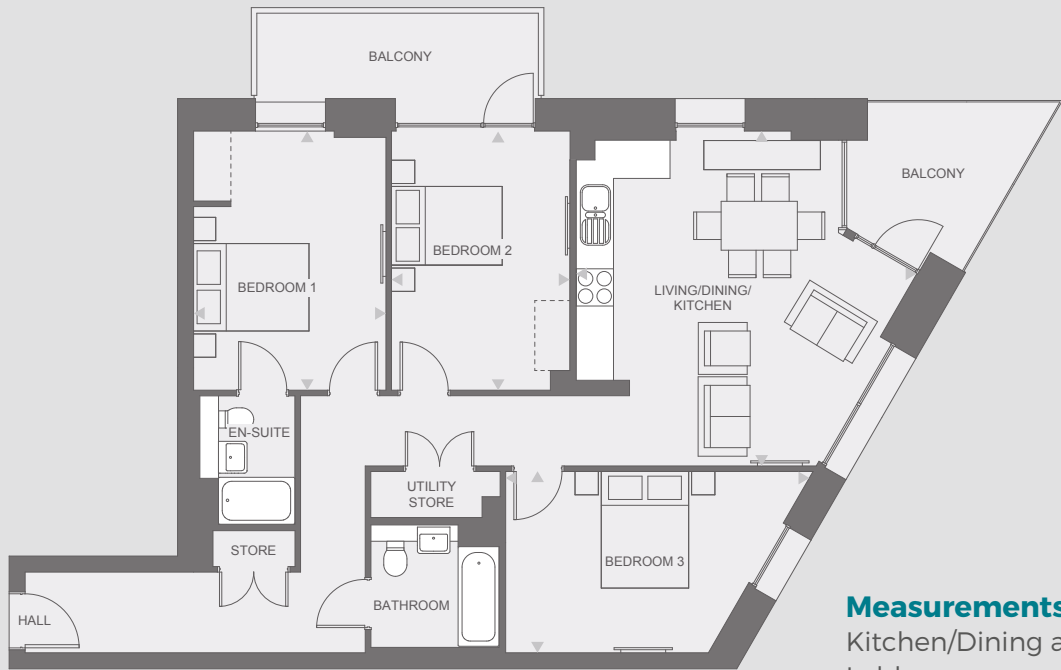
**Measurements**

Kitchen/Dining area	3.55m x 7.05m
Lobby	3.50m x 1.35m
Bedroom 1	4.85m x 3.10m
Bathroom	2.20m x 2.10m
Store room	1.20m x 0.60m
Utility room	1.90m x 0.80m
Balcony	4.20m x 1.80m

Any floor plans in this brochure, are a general outline of the layout of the property for guidance only. All measurements are approximate and may vary and any intending purchasers should not rely on them as statements of fact or representations of fact but must satisfy themselves by inspection or otherwise as to their accuracy. Dimensions shown are not intended to be relied upon for installation of appliances or items of furniture or otherwise.

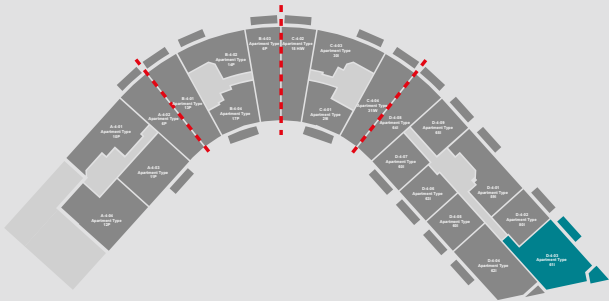


Block D, fourth floor, plot D403 – 3 bedroom

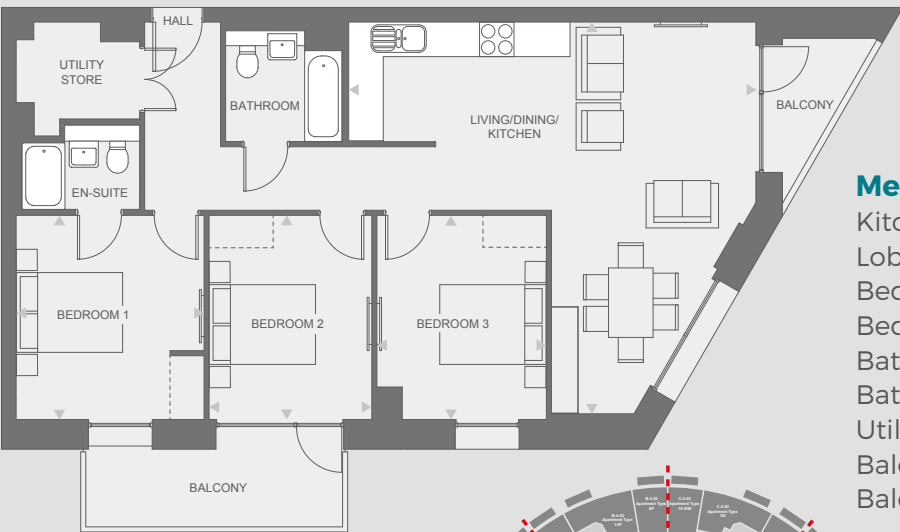


**Measurements**

Kitchen/Dining area	5.55m x 4.30m
Lobby	5.60m x 1.35m
Bedroom 1	4.30m x 3.20m
Bedroom 2	4.30m x 3.00m
Bedroom 3	5.10m x 3.00m
Bathroom 1	2.20m x 2.10m
Bathroom 2	2.20m x 1.60m
Utility room	2.15m x 0.80m
Store room	0.87m x 0.60m
Balcony 1	4.20m x 1.80m
Balcony 2	3.30m x 2.30m

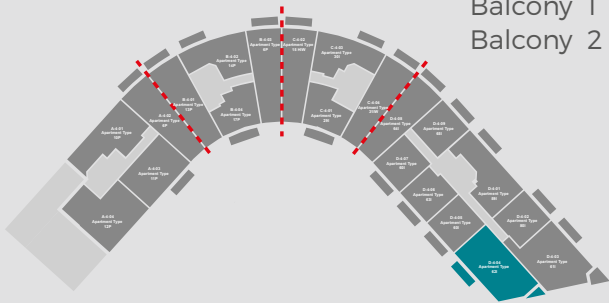


Block D, fourth floor, plot D404 – 3 bedroom

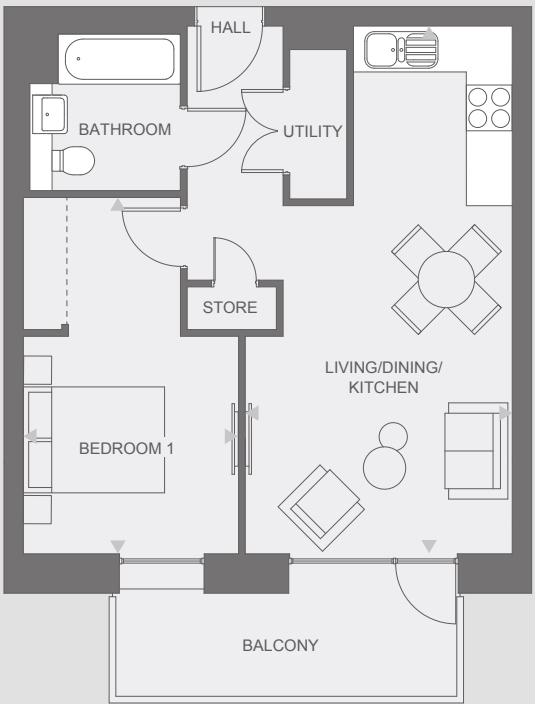


**Measurements**

Kitchen/Dining area	7.40m x 7.15m
Lobby	3.45m x 1.40m
Bedroom 1	3.70m x 3.45m
Bedroom 2	3.70m x 3.00m
Bathroom 1	2.20m x 1.90m
Bathroom 2	2.20m x 2.10m
Utility/store room	2.35m x 2.10m
Balcony 1	4.20m x 1.80m
Balcony 2	2.95m x 1.20m

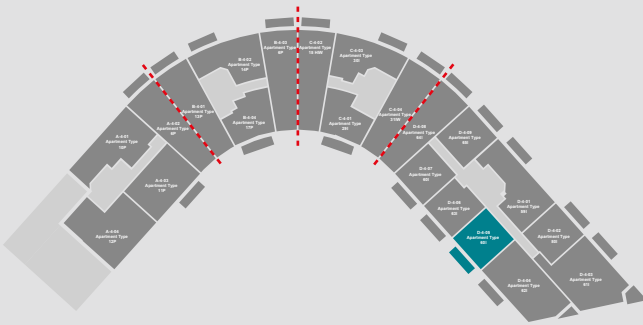


Block D, fourth floor, plot D405– 1 bedroom

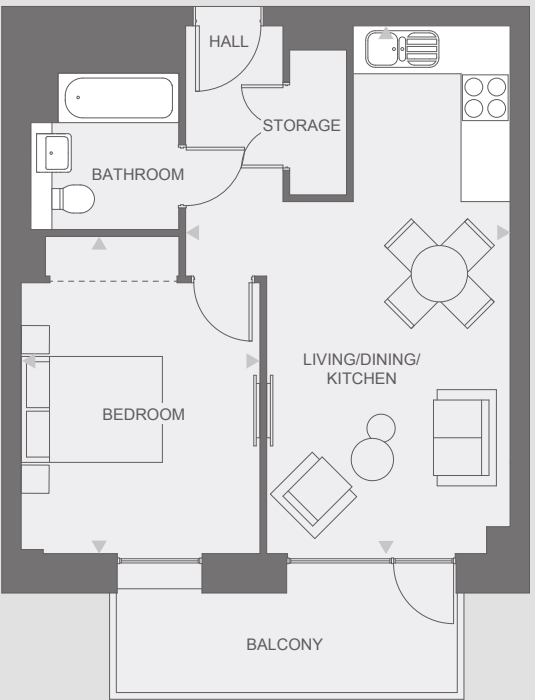


**Measurements**

Kitchen/Dining area	7.20m x 3.70m
Lobby	3.50m x 1.30m
Bedroom 1	4.85m x 2.95m
Bathroom	2.20m x 2.10m
Store room	1.20m x 0.60m
Utility room	2.05m x 0.80m
Balcony	4.20m x 1.80m

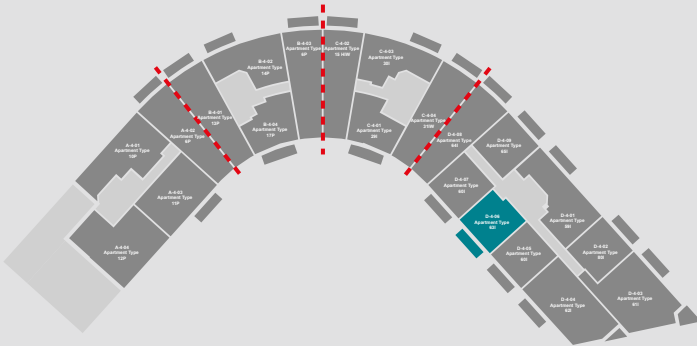


Block D, fourth floor, plot D406 – 1 bedroom



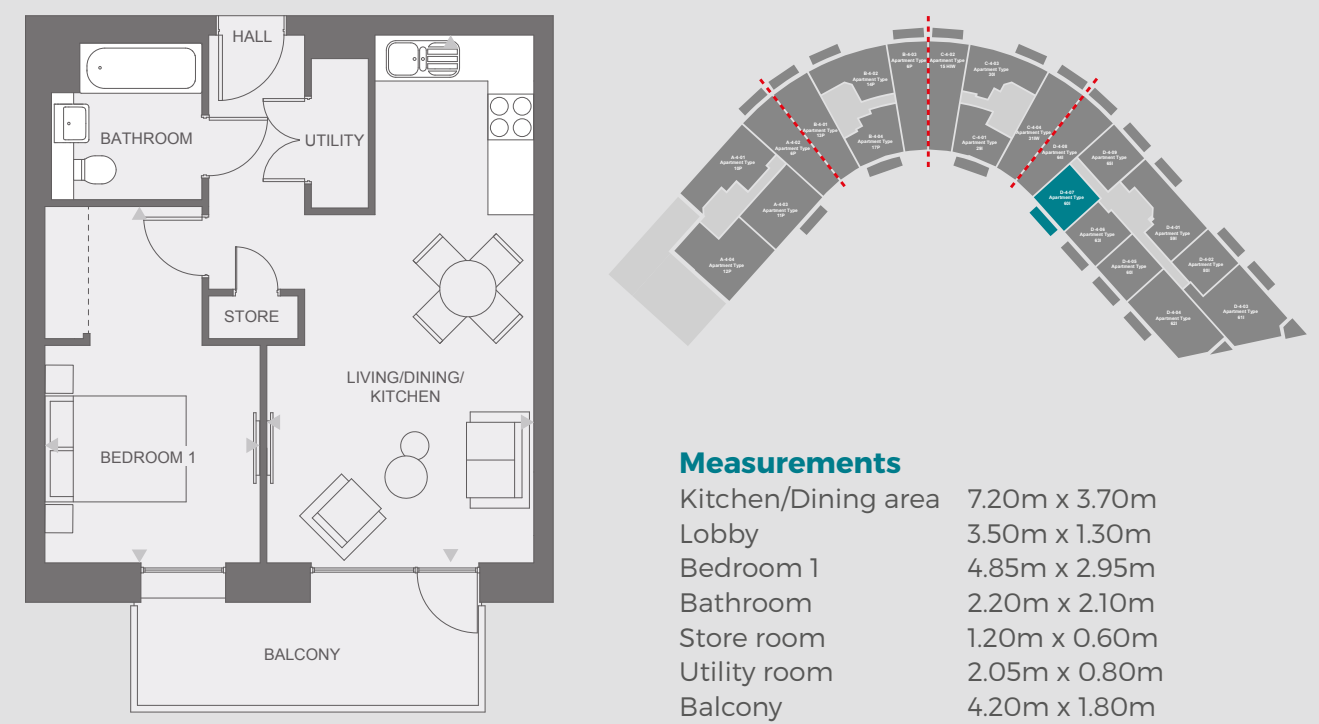
**Measurements**

Kitchen/Dining area	6.85m x 3.35m
Lobby	3.40m x 1.35m
Bedroom 1	3.65m x 3.30m
Bathroom	2.20m x 2.10m
Store room	2.00m x 0.80m
Balcony	4.20m x 1.80m

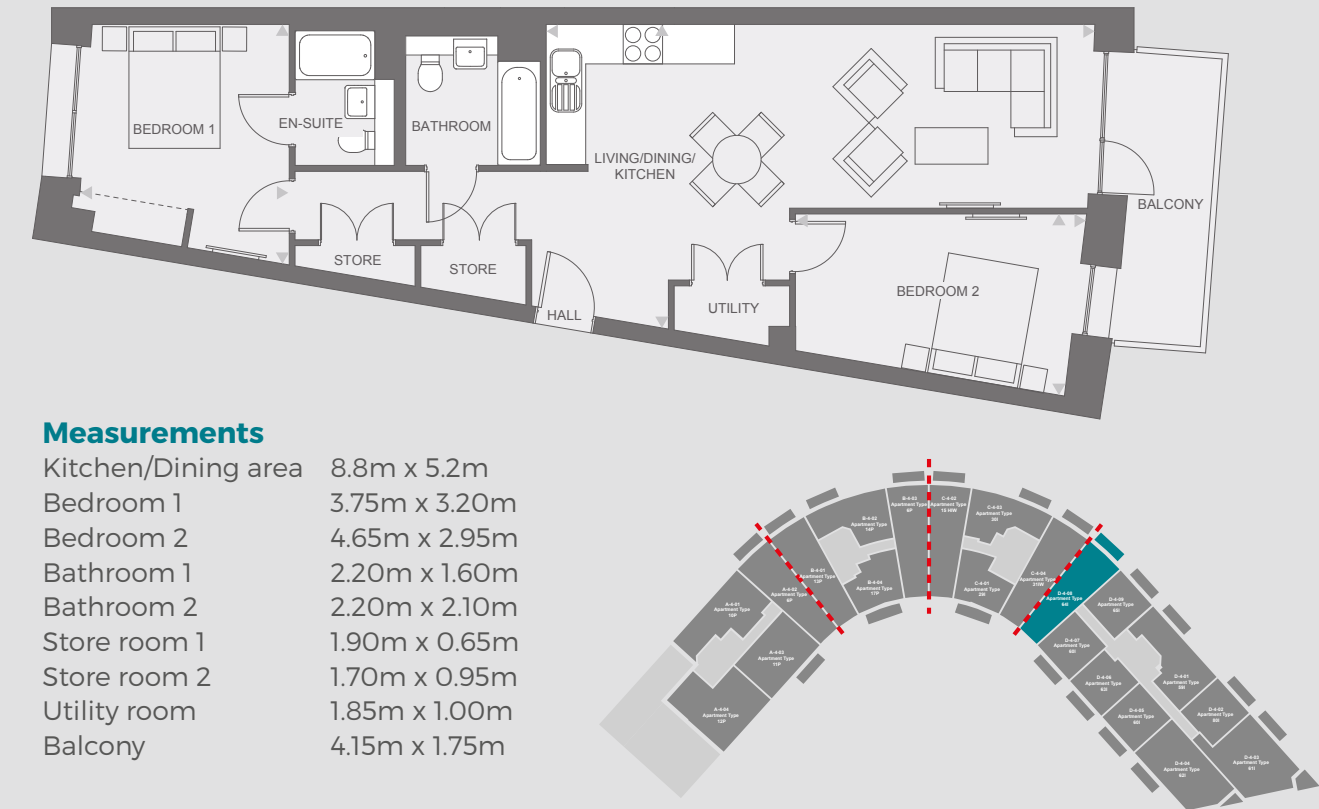




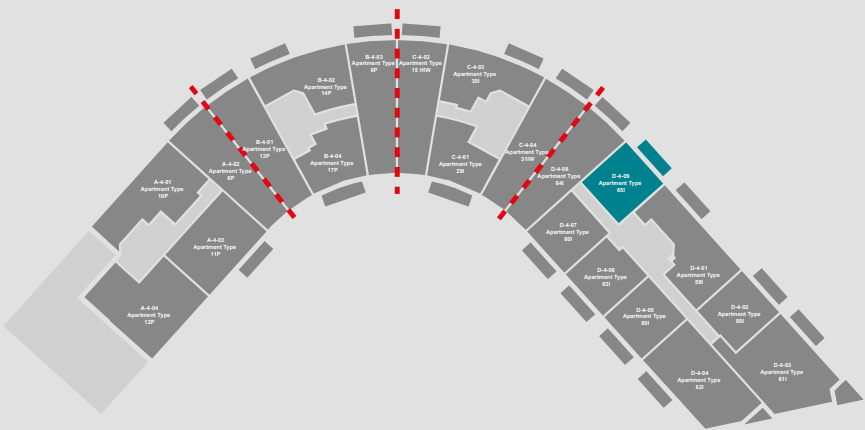
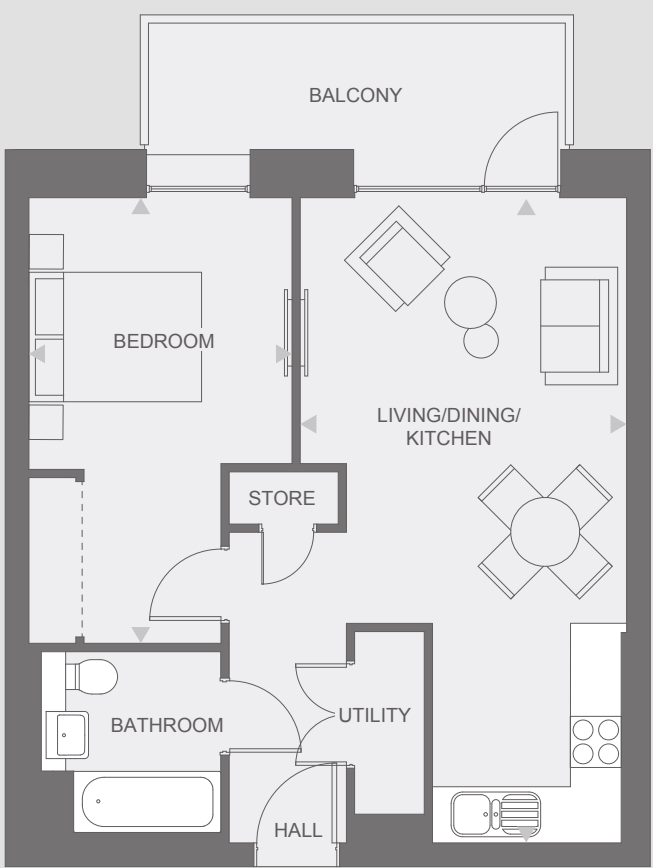
Block D, fourth floor, plot D407 – 1 bedroom



Block D, fourth floor, plot D408 – 2 bedroom



Block D, fourth floor, plot D409– 1 bedroom



**Measurements**

Kitchen/Dining area	7.20m x 3.70m
Lobby	3.50m x 1.35m
Bedroom 1	4.90m x 2.95m
Bathroom	2.20m x 2.10m
Store room	1.25m x 0.60m
Utility room	2.05m x 0.80m
Balcony	4.20m x 1.80m

Any floor plans in this brochure, are a general outline of the layout of the property for guidance only. All measurements are approximate and may vary and any intending purchasers should not rely on them as statements of fact or representations of fact but must satisfy themselves by inspection or otherwise as to their accuracy. Dimensions shown are not intended to be relied upon for installation of appliances or items of furniture or otherwise.



# 10 steps to buying

You've found your dream home, here's what happens next:



## Step 1. Get things moving

We're delighted that you've chosen to enquire about a Home Group development. In the first instance, contact us and we will happily talk you through this process and arrange your viewing. Please phone or call into the sales office to arrange a convenient time.



## Step 2. A little more about you

Before you can reserve your new home, there are some simple forms that you need to complete. These are just a formality, but they're important as they help us tailor our expertise to your requirements. If you require any assistance or help filling them in, your Sales Advisor will be on hand to help.



## Step 3. Arrange your finances

If you need a mortgage to purchase your new home, you'll need to obtain an Agreement in Principle (AIP) from your preferred bank or building society. Many people use the services of an Independent Financial Advisor (IFA) to help them select the right mortgage product and assist with the application process. Home Group can put you in touch with a trusted IFA who will help you select a product that is a good fit for your requirements.



## Step 4. Reserve your home

To secure your home, you need to pay a £1,000 reservation fee (£500 if shared ownership) of which is refundable\*. This reservation fee takes your home off the market for 28 days, (unless otherwise stated) giving you time to ensure you're ready for your move.



## Step 5. Make it legal

Having paid your reservation fee, you need to instruct a solicitor. Your solicitor handles all the legal aspects of your purchase, from reservation to completion. Once you've appointed a solicitor, our legal team will send them a detailed information pack containing all the information they need to assist you with your purchase. If you need help finding a solicitor, your Sales Advisor will be happy to recommend some.



## Step 6. Exchange contracts

Good news, if you're at this stage, your home is reserved. During, or by the end of this 28 day reservation period, you should be in a position to pay your deposit and exchange contracts. Once contracts are exchanged, we are both legally committed to complete on the purchase and you are one step closer to moving in to your new home.



## Step 7. Home Demonstration and Inspection

Before you complete on your purchase, we'll be in touch to arrange a demonstration of your new home. Your Sales Advisor will give you the chance to experience your new home for the first time whilst also gaining your confirmation that you are happy ahead of moving in.



## Step 8. The keys to your new home

Completion normally takes place within 10 working days of exchanging contracts, or as soon as the property is ready to move into. Upon completion, you get the keys and take ownership of your new home.



## Step 9. You're in!

Congratulations and welcome to your new home.



## Step 10. With you ALL the way

Don't worry, we're still here to help you settle in; your Sales Aftercare Team will keep in touch and contact you shortly after you move in, but if you have any questions about your home or need anything in the meantime, just drop us a line. Thank you for choosing Home Group.

\*Fully refunded before instruction of Home Group solicitors. £150 fee will be retained by Home Group as an administration fee if we have instructed our solicitors.



# Get in touch

Phone 0800 073 0600  
Email [BuyAHome@homegroup.org.uk](mailto:BuyAHome@homegroup.org.uk)  
Web [www.homegroup.org.uk](http://www.homegroup.org.uk)

# Let's get social



The details shown in this brochure are a general outline for the guidance of intending purchasers, and do not constitute, nor constitute part of, an offer or contract.

All images, descriptions, dimensions, references to measurements and other details used in this brochure are for illustrative purposes only and are given in good faith but any intending purchasers should not rely on them as statements or representations of fact but must satisfy themselves by inspection or otherwise as to their accuracy.

Home Group Limited (charitable registered society  
No: 22981R)